

ARMY TM 11-7740-236-24P
AIR FORCE TO 31W1-2FSC-124

**ORGANIZATIONAL, DIRECT SUPPORT, AND GENERAL SUPPORT MAINTENANCE
REPAIR PARTS AND SPECIAL TOOLS LISTS
(INCLUDING DEPOT MAINTENANCE REPAIR PARTS AND SPECIAL TOOLS)**

FOR

**DELAY EQUALIZER CN-1259/GSC
(NSNS 5895-00-782-7559)**

AND

**HOUSING DELAY EQUALIZER CH-625/FSC
(NSN 5895-00-782-7558)**

DEPARTMENTS OF THE ARMY AND THE AIR FORCE

MAY 1977

TECHNICAL MANUAL
No. 11-7740-236-24P
TECHNICAL ORDER
No. TO 31W1-2FSC-124

DEPARTMENTS OF THE ARMY
AND THE AIR FORCE
WASHINGTON, DC, 16 May 1977

**ORGANIZATIONAL, DIRECT SUPPORT, AND GENERAL SUPPORT MAINTENANCE
REPAIR PARTS AND SPECIAL TOOLS LISTS
(INCLUDING DEPOT MAINTENANCE REPAIR PARTS AND SPECIAL TOOLS)
FOR
DELAY EQUALIZER CN-1259/FSC
(NSN 5895-00-782-7559)
AND
HOUSING DELAY EQUALIZER CH-625/FSC
(NSN 5895-00-782-7558)**

Current as of 24 February 1977

REPORTING OF ERRORS

You can improve this manual by recommending improvements using DA Form 2028-2 (Test) located in the back of the manual. Simply tear out the self addressed form, fill it out as shown on the sample, fold it where shown, and drop it in the mail.

If there are no blank DA Form 2028-2 (Test) in the back of your manual, use the standard DA Form 2028 (Recommended Changes to Publications and Blank Forms) and forward to the Commander, US Army Electronics Command, ATTN DRSEL-MA-Q, Fort Monmouth, NJ 07703.

In either case a reply will be furnished direct to you.

Table of Contents

	Page	Illus Figure
SECTION I. INTRODUCTION	2	
II. REPAIR PARTS LIST	5	
Group 00 Delay Equalizer		
CN-1259/FSC (DE 3B)		1.
01 DE 3B subassembly (D90052040-1)	7	2.
02 DE 3B subassembly (D90052040-2)	9	3.
03 DE 3B subassembly (D90052040-3)		3.
04 DE 3B subassembly (D90052040-4)		3.
05 DE 3B subassembly (D90052040-5)		3.
06 DE 3B subassembly (D90052040-6)	11	4.
07 Housing Delay Equalizer		
CH-625/FSC		5.
SECTION III. Speed tools list (Not applicable)		
IV. National stock number and part number index	13	

*This manual supersedes so much of TM 11-7440-236-15, 8 May 1969 as pertains to repair parts and special tools list

SECTION I
INTRODUCTION

1. Scope

This manual lists spares and repair parts, special tools; special test, measurements, and diagnostic equipment (TMDE), and other special support equipment required for performance of organizational, direct support, and general support maintenance of the CN-1259/FSC and CH-625/FSC. It authorizes the requisitioning and issue of spares and repair parts as indicated by the source and maintenance codes.

2. General

This Repair Parts and Special Tools List is divided into the following sections:

a Section II Repair Parts List A list of spares and repair parts authorized for use in the performance of maintenance. The list also includes parts which **must be** removed for replacement of the authorized parts. **Parts** lists are composed of functional groups in numeric sequence, with the parts in each group listed in figure and item number sequence.

b. *Section III. Special Tools List.* Not applicable.

c *Section IV National Stock Number and Part Number Index* A list, in National item identification number (NIIN) sequence, of all National stock numbers (NSN) appearing in the listings, followed by a list, in alphanumeric sequence, of all part numbers appearing in the listings. National stock numbers and part numbers are cross-referenced to each illustration figure and item number appearance

3. Explanation of Columns

a *Illustration* This column is divided as follows.

(1) *Figure number* Indicates the figure number of the illustration on which the item is shown.

(2) *Item number* The number used to identify item called out in the illustration.

b *Source, Maintenance, and Recoverability (SMR) Codes*

(1) *Source code.* Source codes indicate the manner of acquiring support items for maintenance, repair, or overhaul of end items. Source codes are entered in the first and second positions of the Uniform SMR Code format as follows:

Code	Definition
PA	Item procured and stocked for anticipated or known usage

AH-Item to be assembled at general support maintenance level.

XD-A support item that is not stocked. When required, item will be procured through normal supply channels.

NOTE

Cannibalization or salvage may be used as a source of supply for any items source coded above except those coded XA and aircraft support items as restricted by AR 700-42.

(2) *Maintenance code.* Maintenance codes are assigned to indicate the levels of maintenance authorized to USE and REPAIR support items. The maintenance codes are entered in the third and fourth positions of the **Uniform SMR Code** format as follows:

(a) **The maintenance code entered in the third position will indicate the lowest maintenance level authorized to remove, replace, and use the support item. The maintenance code entered in the third position will indicate one of the following levels of maintenance:**

Code Application/Explanation

O—Support item is removed, replaced, used at the organizational level.

H—Support item is removed, replaced, used at the general support level.

(b) **The maintenance code entered in the fourth position indicates whether the item is to be repaired and identifies the lowest maintenance level with the capability to perform complete repair (i.e., all authorized maintenance functions). This position will contain one of the following maintenance codes:**

Code Application/Explanation

H—The lowest maintenance level capable of complete repair of the support item is the general support level.

Z—Nonreparable. No repair is authorized.

(3) *Recoverability code.* Recoverability codes are assigned to support items to indicate the disposition action on unserviceable items. The recoverability code is entered in the fifth position of the Uniform SMR Code format as follows:

Code Definition

Z--Nonreparable item When unserviceable, condemn and dispose at the level indicated in position 3

H-Reparable item. When uneconomically reparable, condemn and dispose at the general support level.

c. **National stock** Number. Indicates the National stock number assigned to the item and will be used for requisitioning purposes.

d. **Part Number**. Indicates the primary number used by the manufacturer (individual, company, firm, corporation, or Government activity), which controls the design and characteristics of the item by means of its engineering drawings, specifications, standards, and inspection requirements to identify an item or range of items.

NOTE

When a stock numbered item is requisitioned, the repair part received may have a different part number than the part being replaced.

e. **Federal Supply Code for Manufacturer (FSCM)** The FSCM is a 5-digit numeric code listed in SB 708-42 which is used to identify the manufacturer, distributor, or Government agency, etc.

f. **Description**. Indicates the Federal item name and, if required, a minimum description to identify the item.

g. **Unit of Measure (U/M)**. Indicates the standard of the basic quantity of the listed item as used in performing the actual maintenance function. This measure is expressed by a two-character alphabetical abbreviation (e.g., ea, in, pr, etc). When the unit of measure differs from the unit of issue, the lowest unit of issue that will satisfy the required units of measure will be requisitioned.

h. **Quantity Incorporated in Unit** Indicates the quantity of the item used in the breakout shown on the illustration figure, which is prepared for a functional group, subfunctional group, or an assembly.

4. Special Information

a. Usable on codes are shown in the description column. Uncoded items are applicable to all models. Identification of the usable on codes used in this publication are:

Code	Used on
2QV	CM-125/FSC
2PX	CH-625/FSC

b. Detailed assembly instructions for items source coded to be assembled are found in TM 11-7440-236-15. Assembly components are listed immediately following the item to be assembled.

c. The following publication pertains to the CN-1259/FSC and CH-625/FSC and their components: TM 11-7440-236-15, Delay Equalizer CN-1259/FSC and Housing Delay Equalizer CH-625/FSC

5. How to Locate Repair Parts

a. When National stock number or part number is unknown.

(1) **First** Using the table of contents, determine the functional group within which the item belongs. **This is necessary since illustrations are prepared for functional groups and listings are divided into the same groups**

(2) **Second** Find the illustration covering the functional group to which the item belongs

(3) **Third** Identify the item on the illustration and note the illustration figure and item number of the item.

(4) **Fourth** Using the Repair Parts Listing, find the figure and item number noted on the illustration.

b. When National stock number or part number is known.

(1) **First**. Using the Index of National Stock Numbers and Part Numbers, find the pertinent National stock number or part number. This index is in NIIN sequence followed by a list of part numbers in alphabetic sequence, cross-referenced to the illustration figure number and item number.

(2) **Second** After finding the figure and item number, locate the figure and item number in the repair parts list.

6. Abbreviations

Not applicable.

(Next printed page is 5)

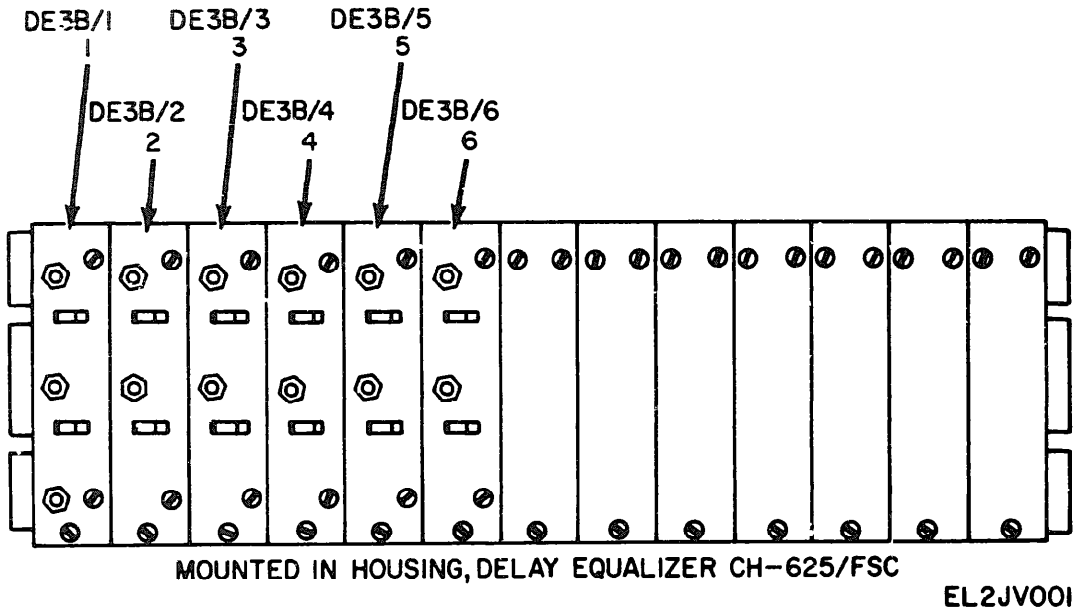


Figure 1. Delay Equalizer CN-1259/FSC (DE 3B),

(1) ILLUSTRATION		(2)	(3)	(4)	(5)	(6)	(7)	(8)
(a) FIG NO	(b) ITEM NO	SMR CODE	NATIONAL STOCK NUMBER	PART NUMBER	FSCM	DESCRIPTION	USABLE ON CODE	QTY INC IN UNIT
						GROUP 00 DELAY EQUALIZER CN-1259/FSC (DE3B)		
1	1	PA0HH	5895-00-937-7168	D90052040-1	96238	DE 3B/1 SUBASSEMBLY	2QV EA	1
1	2	PA0HH	5895-00-937-7169	D90052040-2	96238	DE 3B/2 SUBASSEMBLY	2QV EA	1
1	3	PA0HH	5895-00-937-7170	D90052040-3	96238	DE 3B/3 SUBASSEMBLY	2QV EA	1
1	4	PA0HH	5895-00-937-7434	D90052040-4	96238	DE 3B/4 SUBASSEMBLY	2QV EA	1
1	5	PA0HH	5895-00-937-7171	D90052040-5	96238	DE 3B/5 SUBASSEMBLY	2QV EA	1
1	6	PA0HH	5895-00-937-7172	D90052040-6	96238	DE 3B/6 SUBASSEMBLY	2QV EA	1

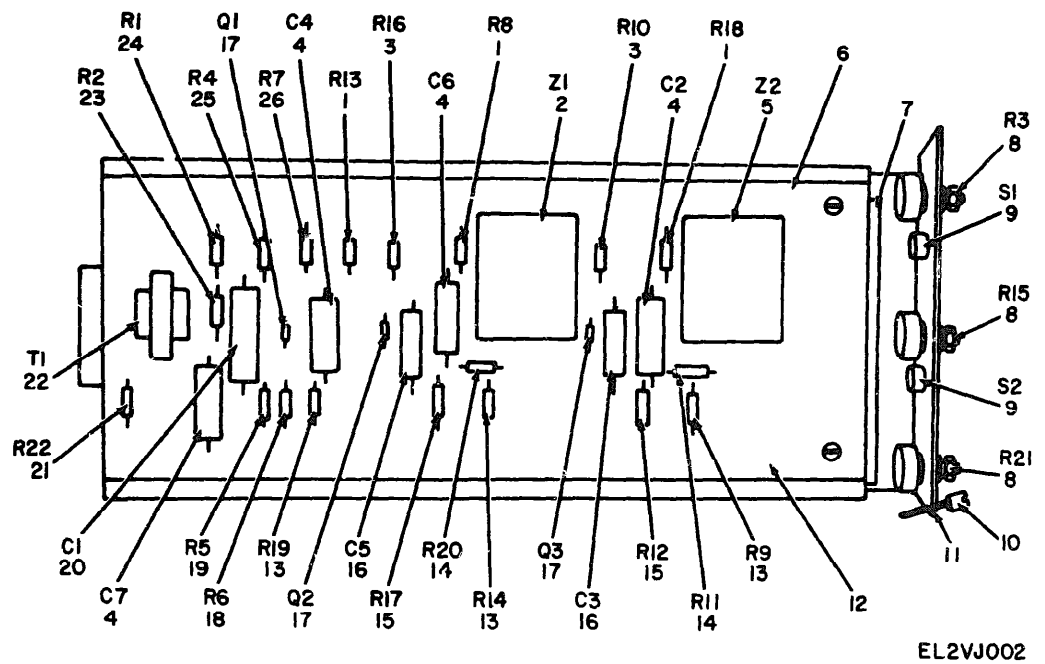


Figure 2. DE 3B Subassembly (D90052040-1).

ILLUSTRATION		DESCRIPTION					QUANTITY	
(1)	(2)	(3)	(4)	(5)	(6)	(7)	(8)	
FIG. NO.	TERM. NO.	SNR CODE	MAT. STOCK NUMBER	PART NUMBER	FCOM	UNIT	LIMIT	
GROUP 01 DE 3S SUBASSEMBLY (090052040-1)								
2	1	PAH22	5905-00-279-3497	RC20GF393J	81349	RESISTOR, FIXED, COMPOSITION	2QV EA 3	
2	2	PAH22	5915-00-937-7184	A43030005-1	96238	NETWORK, HYBRID CIRCUIT	2QV EA 1	
2	3	PAH22	5905-00-279-3509	RC20GF911J	81349	RESISTOR, FIXED, COMPOSITION	2QV EA 2	
2	4	PAH22	5910-00-878-5684	TE1209	56289	CAPACITOR, FIXED, ELECTROLYTIC	2QV EA 4	
2	5	PAH22	5915-00-937-7185	A43030005-2	96238	NETWORK, HYBRID CIRCUIT	2QV EA 1	
2	6	XDH22		C80052041	96238	PRINTED CIRCUIT BOARD	2QV EA 1	
2	7	XDH22		B62020157	96238	BRACKET, ANGLE	2QV EA 1	
2	8	PAH22	5905-00-937-7221	A41650203	96238	RESISTOR, VARIABLE	2QV EA 3	
2	9	PAH22	5930-00-919-1755	G126	79727	SWITCH, SLIDE	2QV EA 2	
2	10	XDH22		61065S0632	06540	SCREW, CAPTIVE	2QV EA 1	
2	11	XDH22		C61010040-01	96238	PANEL, FRONT	2QV EA 1	
2	12	AHHH		C80052040	96238	DE 3S SUBASSEMBLY	2QV EA 1	
2	13	PAH22	5905-00-279-2667	RC20GF113J	81349	RESISTOR, FIXED, COMPOSITION	2QV EA 3	
2	14	PAH22	5905-00-279-1870	RC20GF132J	81349	RESISTOR, FIXED, COMPOSITION	2QV EA 2	
2	15	PAH22	5905-00-195-6806	RC20GF102J	81349	RESISTOR, FIXED, COMPOSITION	2QV EA 2	
2	16	PAH22	5910-00-893-5180	TE1100	56289	CAPACITOR, FIXED, ELECTROLYTIC	2QV EA 2	
2	17	PAH22	5961-00-937-7144	ST223	96238	TRANSISTOR	2QV EA 3	
2	18	PAH22	5905-00-109-6922	RC20GF151J	81349	RESISTOR, FIXED, COMPOSITION	2QV EA 1	
2	19	PAH22	5905-00-141-0591	RC20GF103J	81349	RESISTOR, FIXED, COMPOSITION	2QV EA 1	
2	20	XDH22		CQ04AITC105J1	56289	CAPACITOR, FIXED, PLASTIC	2QV EA 1	
2	21	PAH22	5905-00-279-3511	RC20GF511J	81349	RESISTOR, FIXED, COMPOSITION	2QV EA 1	
2	22	PAH22	5950-00-835-9227	A43001034	96238	TRANSFORMER, AUDIO	2QV EA 1	
2	23	PAH22	5905-00-279-1894	RC20GF820J	81349	RESISTOR, FIXED, COMPOSITION	2QV EA 1	
2	24	PAH22	5905-00-195-6800	RC20GF561J	81349	RESISTOR, FIXED, COMPOSITION	2QV EA 1	
2	25	PAH22	5905-00-192-0667	RC20GF224J	81349	RESISTOR, FIXED, COMPOSITION	2QV EA 1	
2	26	PAH22	5905-00-279-2019	RC20GF512J	81349	RESISTOR, FIXED, COMPOSITION	2QV EA 1	

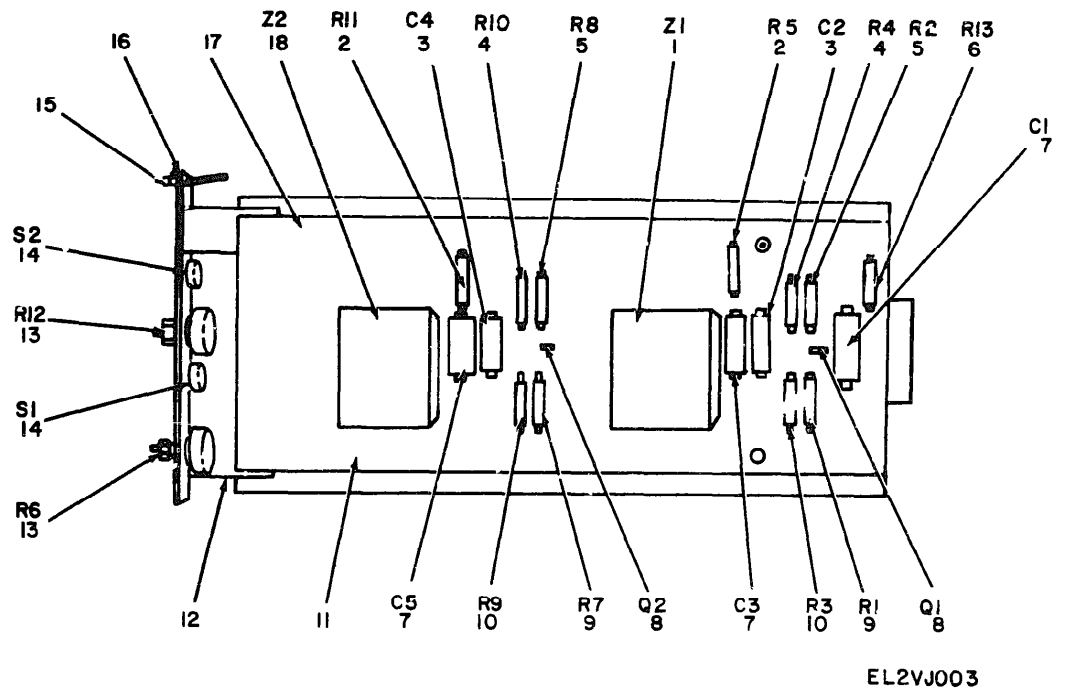


Figure 3. DE 3B Subassembly (D90052040-2).

SECTION II

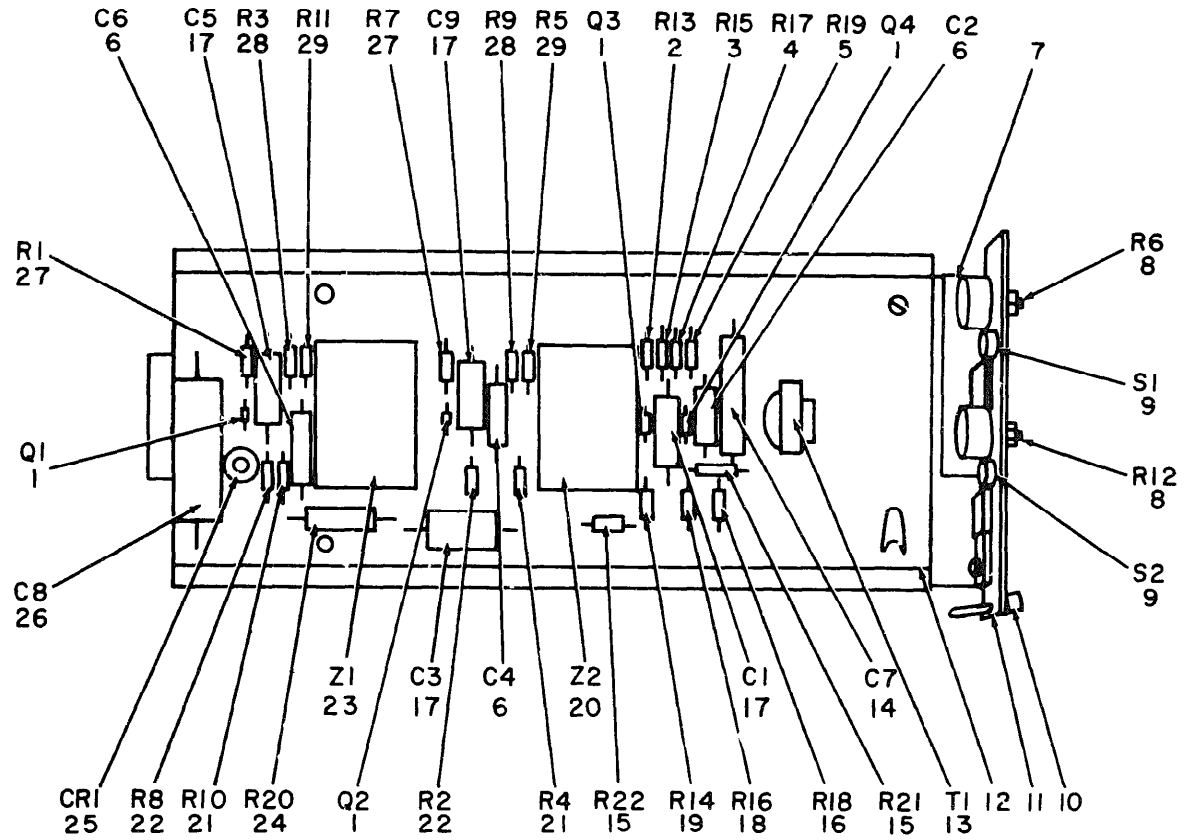
TM 11-7440-236-24P/ TO 31W1-2FSC-124

ILLUSTRATION:		PART				DESCRIPTION	QUANTITY	
(1)	(2)	(3)	(4)	(5)	(6)	(7)	(8)	
FIG NO	ITEM NO	NATIONAL STOCK NUMBER	PART NUMBER	FSCM		TABLE CODE	UNIT	

GROUPS 02 THRU 05 DE 3B SUBASSEMBLIES

(D90052040-2 THRU D90052040-5)

3	1	CDHZZ	A43030005-3	96238	NETWORK, HYBRID CIRCUIT	USED ON DE 3B/2 SUBASSEMBLY	2QV	EA	1	
3	1	CDHZZ	A43030005-5	96238	NETWORK, HYBRID CIRCUIT	USED ON DE 3B/3 SUBASSEMBLY	2QV	EA	1	
3	1	CDHZZ	A43030005-7	96238	NETWORK, HYBRID CIRCUIT	USED ON DE 3B/4 SUBASSEMBLY	2QV	EA	1	
3	1	PAHZZ	5915-00-937-7191	A43030005-9	96238	NETWORK, HYBRID CIRCUIT	USED ON DE 3B/5 SUBASSEMBLY	2QV	EA	1
3	2	PAHZZ	5905-00-279-1870	RC20GF132J	81349	RESISTOR, FIXED, COMPOSITION	2QV	EA	2	
3	3	PAHZZ	5910-00-893-5180	TE1100	56289	CAPACITOR, FIXED, ELECTROLYTIC	2QV	EA	2	
3	4	PAHZZ	5905-00-279-2667	RC20GF113J	81349	RESISTOR, FIXED, COMPOSITION	2QV	EA	2	
3	5	PAHZZ	5905-00-195-6806	RC20GF102J	81349	RESISTOR, FIXED, COMPOSITION	2QV	EA	2	
3	6	PAHZZ	5905-00-106-9344	RCR20G101JS	81349	RESISTOR, FIXED, COMPOSITION	2QV	EA	1	
3	7	PAHZZ	5910-00-878-5654	TE1209	56289	CAPACITOR, FIXED, ELECTROLYTIC	2QV	EA	3	
3	8	PAHZZ	5961-00-937-7144	ST223	96238	TRANSISTOR	2QV	EA	2	
3	9	PAHZZ	5905-00-279-3509	RC20GF911J	81349	RESISTOR, FIXED, COMPOSITION	2QV	EA	2	
3	10	PAHZZ	5905-00-279-3497	RC20GF393J	81349	RESISTOR, FIXED, COMPOSITION	2QV	EA	2	
3	11	XDHZZ		C80052031	96238	PRINTED CIRCUIT BOARD	2QV	EA	1	
3	12	XDHZZ		B62020157	96238	BRACKET, ANGLE	2QV	EA	1	
3	13	PAHZZ	5905-00-937-7221	A41650203	96238	RESISTOR, VARIABLE	2QV	EA	2	
3	14	PAHZZ	5930-00-919-1755	G126	79727	SWITCH, SLIDE	2QV	EA	2	
3	15	XDHZZ		6106550632	06540	SCREW, CAPTIVE	2QV	EA	1	
3	16	XDHZZ		C61010040-02	96238	PANEL, FRONT	2QV	EA	1	
3	17	AHHHH		C80052030-01	96238	DE 3B SUBASSEMBLY USED ON DE 3B/2 SUBASSEMBLY	2QV	EA	1	
3	17	AHHHH		C80052030-02	96238	DE 3B SUBASSEMBLY USED ON DE 3B/3 SUBASSEMBLY	2QV	EA	1	
3	17	AHHHH		C80052030-03	96238	DE 3B SUBASSEMBLY USED ON DE 3B/4 SUBASSEMBLY	2QV	EA	1	
3	17	AHHHH		C80052030-04	96238	DE 3B SUBASSEMBLY USED ON DE 3B/5 SUBASSEMBLY	2QV	EA	1	
3	18	PAHZZ	5915-00-937-7187	A43030005-4	96238	NETWORK, HYBRID CIRCUIT	USED ON DE 3B/2 SUBASSEMBLY	2QV	EA	1
3	18	PAHZZ	5915-00-937-7189	A43030005-6	96238	NETWORK, HYBRID CIRCUIT	USED ON DE 3B/3 SUBASSEMBLY	2QV	EA	1
3	18	XDHZZ		A43030005-8	96238	NETWORK, HYBRID CIRCUIT	USED ON DE 3B/4 SUBASSEMBLY	2QV	EA	1
3	18	XDHZZ		A43030005-10	96238	NETWORK, HYBRID CIRCUIT	USED ON DE 3B/5 SUBASSEMBLY	2QV	EA	1



EL2VJ004

Figure 4. DE 3B Subassembly (D90052040-6).

SECTION II

TM 11-7440-236-24P/ TO 31W1-2FSC-124

ILLUSTRATION					(6)	(7)	(8)	
(4)	(5)	(1)	(2)	(3)	DESCRIPTION	QTY	INC	
FIG	ITEM	SNIP	NATIONAL STOCK	PART		EA	UNIT	
NO	NO	CODE	NUMBER	NUMBER	FSCM			
							USABLE QTY CODE	
GROUP 06 DE 3B SUBASSEMBLY (D90052040-6)								
4	1	PAHZZ	5961-00-937-7144	ST223	96238	TRANSISTOR	2QV EA 4	
4	2	PAHZZ	5905-00-279-2019	RC20GF512J	81349	RESISTOR, FIXED, COMPOSITION	2QV EA 1	
4	3	PAHZZ	5905-00-279-3495	RC20GF753J	81349	RESISTOR, FIXED, COMPOSITION	2QV EA 1	
4	4	PAHZZ	5905-00-841-7458	RC20GF751J	81349	RESISTOR, FIXED, COMPOSITION	2QV EA 1	
4	5	PAHZZ	5905-00-279-3506	RC20GF332J	81349	RESISTOR, FIXED, COMPOSITION	2QV EA 1	
4	6	PAHZZ	5910-00-893-5180	TE1100	56289	CAPACITOR, FIXED, ELECTROLYTIC	2QV EA 3	
4	7	XDHZZ		E62020157	96238	BRACKET, ANGLE	2QV EA 1	
4	8	PAHZZ	5905-00-937-7221	A41650203	96238	RESISTOR, VARIABLE	2QV EA 2	
4	9	PAHZZ	5930-00-919-1755	G126	79727	SWITCH, SLIDE	2QV EA 2	
4	10	XDHZZ		6106SS0632	06540	SCREW, CAPTIVE	2QV EA 1	
4	11	XDHZZ		C61010040-06	96238	PANEL, FRONT	2QV EA 1	
4	12	AHHHH		C80052050	96238	DE 3B SUBASSEMBLY	2QV EA 1	
4	13	PAHZZ	5950-00-835-9227	A43001034	96238	TRANSFORMER, AUDIO	2QV EA 1	
4	14	PAHZZ	5910-00-827-1209	30D107G025DH4	56289	CAPACITOR, FIXED, ELECTROLYTIC	2QV EA 1	
4	15	PAHZZ	5905-00-106-9344	RCR20G101JS	81349	RESISTOR, FIXED, COMPOSITION	2QV EA 2	
4	16	PAHZZ	5905-00-111-8357	RC20GF681J	81349	RESISTOR, FIXED, COMPOSITION	2QV EA 1	
4	17	PAHZZ	5910-00-878-5664	TE1209	56289	CAPACITOR, FIXED, ELECTROLYTIC	2QV EA 4	
4	18	PAHZZ	5905-00-279-3499	RC20GF273J	81349	RESISTOR, FIXED, COMPOSITION	2QV EA 1	
4	19	PAHZZ	5905-00-190-8881	RC20GF182J	81349	RESISTOR, FIXED, COMPOSITION	2QV EA 1	
4	20	PAHZZ	5915-00-835-9215	A43030005-12	96238	NETWORK, HYBRID CIRCUIT	2QV EA 1	
4	21	PAHZZ	5905-00-279-2667	RC20GF113J	81349	RESISTOR, FIXED, COMPOSITION	2QV EA 2	
4	22	PAHZZ	5905-00-195-6806	RC20GF102J	81349	RESISTOR, FIXED, COMPOSITION	2QV EA 2	
4	23	XDHZZ		A43030005-11	96238	NETWORK, HYBRID CIRCUIT	2QV EA 1	
4	24	PAHZZ	5905-00-570-2128	5X-400	63743	RESISTOR, FIXED, WIRE WOUND	2QV EA 1	
4	25	PAHZZ	5961-00-879-2474	MILS19500-115	81349	SEMICONDUCTOR DEVICE, DIODE	2QV EA 1	
4	26	PAHZZ	5910-00-964-5240	BR500-25	14655	CAPACITOR, FIXED, ELECTROLYTIC	2QV EA 1	
4	27	PAHZZ	5905-00-279-3509	RC20GF911J	81349	RESISTOR, FIXED, COMPOSITION	2QV EA 2	
4	28	PAHZZ	5905-00-279-3497	RC20GF393J	81349	RESISTOR, FIXED, COMPOSITION	2QV EA 2	
4	29	PAHZZ	5905-00-279-1870	RC20GF132J	81349	RESISTOR, FIXED, COMPOSITION	2QV EA 2	

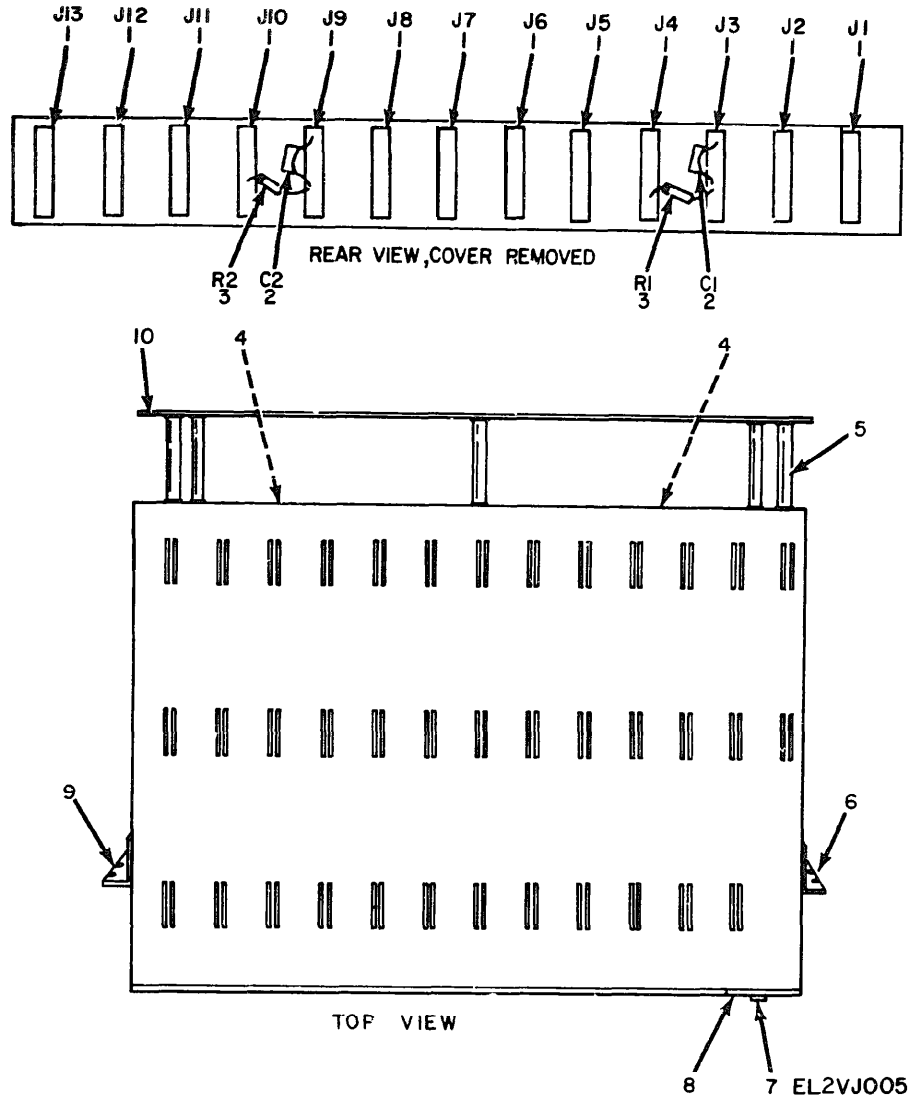


Figure 5. Housing Equalizer CH-625/FSC.

(1) ILLUSTRATION		(2)	(3)	(4)	(5)	(6)	(7)	(8)
(a) FIG NO	(b) ITEM NO	SMR CODE	NATIONAL STOCK NUMBER	PART NUMBER	FSCM	DESCRIPTION	QTY INC IN UNIT	
							USABILITY CODE	
GROUP 07 HOUSING EQUALIZER CH-625/FSC								
5	1	PA0ZZ	5935-00-837-5717	143-010-12	02660	CONNECTOR, RECEPTACLE, ELECTRICAL	2PX EA	13
5	2	PA0ZZ	5910-00-852-8642	CK618X681K	81349	CAPACITOR, FIXED, CERAMIC	2PX EA	2
5	3	PA0ZZ	5905-00-279-2019	RC20GF512J	81345	RESISTOR, FIXED, COMPOSITION	2PX EA	2
5	4	XDOZZ		855080047	96238	STRIP, INSULATOR	2PX EA	1
5	5	XDOZZ		9767SS0632-7	06540	INSULATOR, STANDOFF	2PX EA	6
5	6	XDOZZ		862020153-01	96238	BRACKET, ANGLE	2PX EA	1
5	7	XDOZZ		6105SS0632	06540	SCREW, CAPTIVE	2PX EA	1
5	8	XDOZZ		C61010040-07	96238	PANEL, FRONT	2PX EA	1
5	9	XDOZZ		862020153-02	96238	BRACKET, ANGLE	2PX EA	1
5	10	XDOZZ		C62040052	96238	COVER, REAR	2PX EA	1

NOTE: LATEST NATIONAL STOCK NUMBER AND PART NUMBER ASSIGNMENT INCLUDED AT END OF INDEX

STOCK NUMBER	FIGURE NO.	ITEM NO.	STOCK NUMBER	FIGURE NO.	ITEM NO.
5905-00-108-8922	2	18	5915-00-835-9215	4	20
5905-00-111-8357	4	16	5950-00-835-9227	2	22
5905-00-141-0591	2	19	5950-00-835-9227	4	13
5905-00-190-8881	4	19	5935-00-837-5717	5	1
5905-00-192-0667	2	25	5910-00-878-5664	2	4
5905-00-195-6800	2	24	5910-00-878-5664	3	7
5905-00-195-6806	2	15	5910-00-878-5664	4	17
5905-00-195-6806	3	5	5910-00-893-5180	2	16
5905-00-195-6806	4	22	5930-00-919-1755	2	9
5905-00-279-1870	2	14	5930-00-919-1755	3	14
5905-00-279-1870	3	2	5930-00-919-1755	4	9
5905-00-279-1870	4	29	5961-00-937-7144	2	17
5905-00-279-1894	2	23	5961-00-937-7144	3	8
5905-00-279-2019	2	26	5961-00-937-7144	4	1
5905-00-279-2019	4	2	5895-00-937-7168	1	1
5905-00-279-2019	5	3	5895-00-937-7169	1	2
5905-00-279-2667	2	13	5895-00-937-7170	1	3
5905-00-279-2667	3	4	5895-00-937-7171	1	5
5905-00-279-2667	4	21	5895-00-937-7172	1	6
5905-00-279-3495	4	3	5915-00-937-7184	2	2
5905-00-279-3497	2	1	5915-00-937-7185	2	5
5905-00-279-3497	3	10	5915-00-937-7187	3	18
5905-00-279-3497	4	28	5915-00-937-7189	3	18
5905-00-279-3499	4	18	5915-00-937-7191	3	1
5905-00-279-3506	4	5	5905-00-937-7221	2	8
5905-00-279-3509	2	3	5905-00-937-7221	3	13
5905-00-279-3509	4	27	5905-00-937-7221	4	8
5905-00-279-3511	2	21	5895-00-937-7434	1	4
5905-00-570-2128	4	24	5910-00-954-5240	4	26

PART NUMBER	FSCM	FIG. NO.	ITEM NO.	PART NUMBER	FSCM	FIG. NO.	ITEM NO.
A41650203	96238	2	8	G126	79727	3	14
A41650203	96238	3	13	G126	79727	4	9
A41650203	96238	4	8				
A43001034	96238	2	22				
A43001034	96238	4	13	RC20GF102J	81349	2	15
A43030005-1	96238	2	2	RC20GF102J	81349	3	5
A43030005-10	96238	3	18	RC20GF102J	81349	4	22
A43030005-11	96238	4	23	RC20GF103J	81349	2	19
A43030005-12	96238	4	20	RC20GF113J	81349	2	13
A43030005-2	96238	2	5	RC20GF113J	81349	3	4
A43030005-3	96238	3	1	RC20GF113J	81349	4	21
A43030005-4	96238	3	18	RC20GF132J	81349	2	14
A43030005-5	96238	3	1	RC20GF132J	81349	3	2
A43030005-6	96238	3	18	RC20GF132J	81349	4	29
A43030005-7	96238	3	1	RC20GF151J	81349	2	18
A43030005-8	96238	3	18	RC20GF182J	81349	4	19
A43030005-9	96238	3	1	RC20GF224J	81349	2	25
BR500-25	14655	4	26	RC20GF273J	81349	4	18
B55080047	96238	5	4	RC20GF332J	81349	4	5
B62020153-01	96238	5	6	RC20GF393J	81349	2	1
862020153-02	96238	5	9	RC20GF393J	81349	3	10
B62020157	96238	2	7	RC20GF393J	81349	4	28
B62020157	96238	3	12	RC20GF511J	81349	2	21
B62020157	96238	4	7	RC20GF512J	81349	2	26
CK61BX681K	81349	5	2	RC20GF512J	81349	4	2
C004A1TC105JT	56289	2	20	RC20GF512J	81349	5	3
C61010040-01	96238	2	11	RC20GF561J	81349	2	24
C61010040-02	96238	3	16	RC20GF681J	81349	4	16
C61010040-06	96238	4	11	RC20GF751J	81349	4	4
C61010040-07	96238	5	8	RC20GF753J	81349	4	3
C62040052	96238	5	10	RC20GF820J	81349	2	23
C80052030-01	96238	3	17	RC20GF911J	81349	2	3
C80052030-02	96238	3	17	RC20GF911J	81349	3	9
C80052030-03	96238	3	17	RC20GF911J	81349	4	27
C80052030-04	96238	3	17	ST223	96238	2	17
C80052031	96238	3	11	ST223	96238	3	8
C80052040	96238	2	12	ST223	96238	4	1
C80052041	96238	2	6	TE1100	56289	2	16
C80052050	96238	4	12	TE1100	56289	3	3
D90052040-1	96238	1	1	TE1100	56289	4	6
090052040-2	96238	1	2	TE1209	56289	2	4
D90052040-3	96238	1	3	TE1209	56289	3	7
D90052040-4	96238	1	4	TE1209	56289	4	17
D90052040-5	96238	1	5				
D90052040-6	96238	1	6				
G126	79727	2	9	143-010-12	02660	5	1

PART NUMBER	FSCM	FIG. NO.	ITEM NO.	PART NUMBER	FSCM	FIG. NO.	ITEM NO.
5X-400	63743	4	24	6106SS0632	06540	5	7
6106S0632	06540	2	10	6106550632	66540	3	15
6106SS0632	06540	4	10	9767SS0632-7	06540	5	5

LATEST NATIONAL STOCK NUMBER ASSIGNMENTS

STOCK NUMBER	FIG NO	ITEM NO
5905-00-106-9344	3	6
5905-00-106-9344	4	15
905-00-279-3509	3	9
5910-00-827-1209	4	14
5905-00-841-7458	4	4
5910-00-852-8642	5	2
5961-00-879-2474	4	25
5910-00-893-5180	3	3
5910-00-893-5180	4	6

LATEST PART NUMBER ASSIGNMENTS

PART NUMBER	FSCM	FIG NO	ITEM NO
MILS19500-115	81349	4	25
RCR20G101JS	81349	3	6
RCR20G101JS	81349	4	15
30D107G025DH4	56289	4	14

RECOMMENDED CHANGES TO EQUIPMENT TECHNICAL MANUALS



SOMETHING WRONG WITH THIS MANUAL?

THEY... JOT DOWN THE DOPE ABOUT IT ON THIS FORM, TEAR IT OUT, FOLD IT AND DROP IT IN THE MAIL!

FROM: (YOUR UNIT'S COMPLETE ADDRESS)

Commander
Stateside Army Depot
ATTN: AMSTA-US
Stateside, N.J. 07703

DATE 10 July 1975

PUBLICATION NUMBER

TM 11-58.0-340-12

DATE

23 Jan. 74

TITLE

Radar Set AN/SP-76

BE EXACT PIN-POINT WHERE IT IS

IN THIS SPACE TELL WHAT IS WRONG AND WHAT SHOULD BE DONE ABOUT IT:

PAGE NO.	PARA-GRAPH	FIGURE NO.	TABLE NO.
----------	------------	------------	-----------

2-25	2-21		
3-10	3-3		3-1
5-6	5-8		

Recommend that the installation antenna alignment procedure be changed throughout to specify a 2° IFF antenna lag rather than 1°.

REASON: Experience has shown that with only a 1° lag, the antenna servo system is too sensitive to wind gusting in excess of 25 knots, and has a tendency to rapidly accelerate and decelerate as it hunts, causing strain to the drive train. Hunting is minimized by adjusting the lag to 2° without degradation of operation.

3-10 3-3

3-1

Item 5, Function column. Change "2 db" to "3db."

REASON: The adjustment procedure for the TRANS POWER FAULT indicator calls for a 3 db (500 watts) adjustment to light the TRANS POWER FAULT indicator.

5-6 5-8

Add new step f.1 to read, "Replace cover plate removed in step e.1, above."

REASON: To replace the cover plate.

F03

Zone C 3. On J1-2, change "+24 VDC to "+5 VDC."

REASON: This is the output line of the 5 VDC power supply. + 24 VDC is the input voltage.

TYPED NAME, GRADE OR TITLE, AND TELEPHONE NUMBER

SSG I. M. DeSpirito 999-1776

SIGN HERE

SSG I. M. DeSpirito

DA FORM 1 AUG 74 2028-2 (TEST)

PS --IF YOUR OUTFIT WANTS TO KNOW ABOUT YOUR MANUAL "FIND" MAKE A CARBON COPY OF THIS AND GIVE IT TO YOUR HEADQUARTERS.

HISA 1686-75

TEAR ALONG DOTTED LINE

RECOMMENDED CHANGES TO EQUIPMENT TECHNICAL MANUALS



SOMETHING WRONG WITH THIS MANUAL?

THEN... JOT DOWN THE DOPE ABOUT IT ON THIS FORM, TEAR IT OUT, FOLD IT AND DROP IT IN THE MAIL!

FROM: (YOUR UNIT'S COMPLETE ADDRESS)

DATE

PUBLICATION NUMBER

DATE

TITLE

BE EXACT... PIN-POINT WHERE IT IS

IN THIS SPACE TELL WHAT IS WRONG AND WHAT SHOULD BE DONE ABOUT IT:

PAGE NO.	PARAGRAPH	FIGURE NO.	TABLE NO.

IN THIS SPACE TELL WHAT IS WRONG AND WHAT SHOULD BE DONE ABOUT IT:

TYPED NAME, GRADE OR TITLE, AND TELEPHONE NUMBER

SIGN HERE

FILL IN YOUR
UNIT'S ADDRESS

FOLD BACK

DEPARTMENT OF THE ARMY

OFFICIAL BUSINESS
PENALTY FOR PRIVATE USE \$300

POSTAGE AND FEES PAID
DEPARTMENT OF THE ARMY
DOD-314



Commander
US Army Electronics Command
ATTN: DRSEL-MA-Q
Fort Monmouth, New Jersey 07703

TEAR ALONG DOTTED LINE

FOLD BACK

RECOMMENDED CHANGES TO EQUIPMENT TECHNICAL MANUALS



THEN... JOT DOWN THE DOPE ABOUT IT ON THIS FORM, TEAR IT OUT, FOLD IT AND DROP IT IN THE MAIL!

SOMETHING WRONG WITH THIS MANUAL?

FROM: (YOUR UNIT'S COMPLETE ADDRESS)

DATE

PUBLICATION NUMBER

DATE

TITLE

BE EXACT. . . PIN-POINT WHERE IT IS

IN THIS SPACE TELL WHAT IS WRONG AND WHAT SHOULD BE DONE ABOUT IT:

PAGE NO.	PARA-GRAPH	FIGURE NO.	TABLE NO.

TEAR ALONG DOTTED LINE

TYPED NAME, GRADE OR TITLE AND TELEPHONE NUMBER

SIGN HERE

FILL IN YOUR
UNIT'S ADDRESS

FOLD BACK

DEPARTMENT OF THE ARMY

OFFICIAL BUSINESS

PENALTY FOR PRIVATE USE \$300

POSTAGE AND FEES PAID
DEPARTMENT OF THE ARMY
DOD-314



Commander
US Army Electronics Command
ATTN: DRSEL-MA-Q
Fort Monmouth, New Jersey 07703

TEAR ALONG DOTTED LINE

FOLD BACK

RECOMMENDED CHANGES TO EQUIPMENT TECHNICAL MANUALS



THEN... JOT DOWN THE DOPE ABOUT IT ON THIS FORM, TEAR IT OUT, FOLD IT AND DROP IT IN THE MAIL!

SOMETHING WRONG WITH THIS MANUAL?

FROM: (YOUR UNIT'S COMPLETE ADDRESS)

DATE

PUBLICATION NUMBER

DATE

TITLE

BE EXACT... PIN-POINT WHERE IT IS

IN THIS SPACE TELL WHAT IS WRONG AND WHAT SHOULD BE DONE ABOUT IT.

PAGE NO.	PARA-GRAPH	FIGURE NO.	TABLE NO.

TEAR ALONG DOTTED LINE

TYPED NAME, GRADE OR TITLE, AND TELEPHONE NUMBER

SIGN HERE

DA FORM 2028-2 (TEST)
1 AUG 74

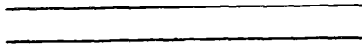
P.S.--IF YOUR OUTFIT WANTS TO KNOW ABOUT YOUR MANUAL "FIND," MAKE A CARBON COPY OF THIS AND GIVE IT TO YOUR HEADQUARTERS.

FILL IN YOUR
UNIT'S ADDRESS



FOLD BACK

DEPARTMENT OF THE ARMY



OFFICIAL BUSINESS

PENALTY FOR PRIVATE USE \$300

POSTAGE AND FEES PAID
DEPARTMENT OF THE ARMY
DOD-314



Commander
US Army Electronics Command
ATTN: DRSEL-MA-Q
Fort Monmouth, New Jersey 07703

TEAR ALONG DOTTED LINE

FOLD BACK

By Order of the Secretaries of the Army and the Air Force:

BERNARD W. ROGERS
General, United States Army
Chief of Staff

Official:

PAUL T. SMITH
Major General, United States Army
The Adjutant General

DAVID C. JONES, General, USAF
Chief of Staff

Official:

F.M. ROGERS, General USAF
Commander, Air Force Logistics Command

DISTRIBUTION

Active Army:

USASA (2)
USASAPAC (1)
DCSFOR (2)
DARCOM (1)
TECOM (2)
TRADOC (1)
OS Maj Comd (2)
 except USAREUR (3)
USACC (6)
USACC-EUR (5)
USACC-CONUS (3)
USACC-SO (3)
USACC-A (3)
7th & 8th Armies (4)
USACC-PAC (2)
Ft Carson (2)
Ft Richardson (ECOM Ofc) (2)
SAAD (16)
TOAD (10)

ARNG & USAR: None.

For explanation of abbreviations used, see AR 310-50.

Ft Gillem (5)
LBAD (5)
Sig Bde (USACC) Korea (1)
Sig Gp (USACC) Japan (1)
Sig Gp (VSACC) Taiwan (1)
USA Dep (1) except
 Pirmasens (5)
Sig Sec USA Dept (2)
Sig Dep (2)
USACSA (4)
USAICS (3)
USACOMZEUR (2)
USAERDAA (1)
USAERDAW (1)
Sig FLDMS (1)
USASATCOMA (2)
Units erg under fol TOE.
 29-134 (1)
 29-136 (1)

**DEPARTMENT OF THE ARMY
US ARMY AG PUBLICATIONS CENTER
1655 WOODSON ROAD
ST LOUIS, MISSOURI 63114**

**OFFICIAL BUSINESS
PENALTY FOR PRIVATE USE \$300**

**POSTAGE AND FEES PAID
DEPARTMENT OF THE ARMY
DOD 314**



END

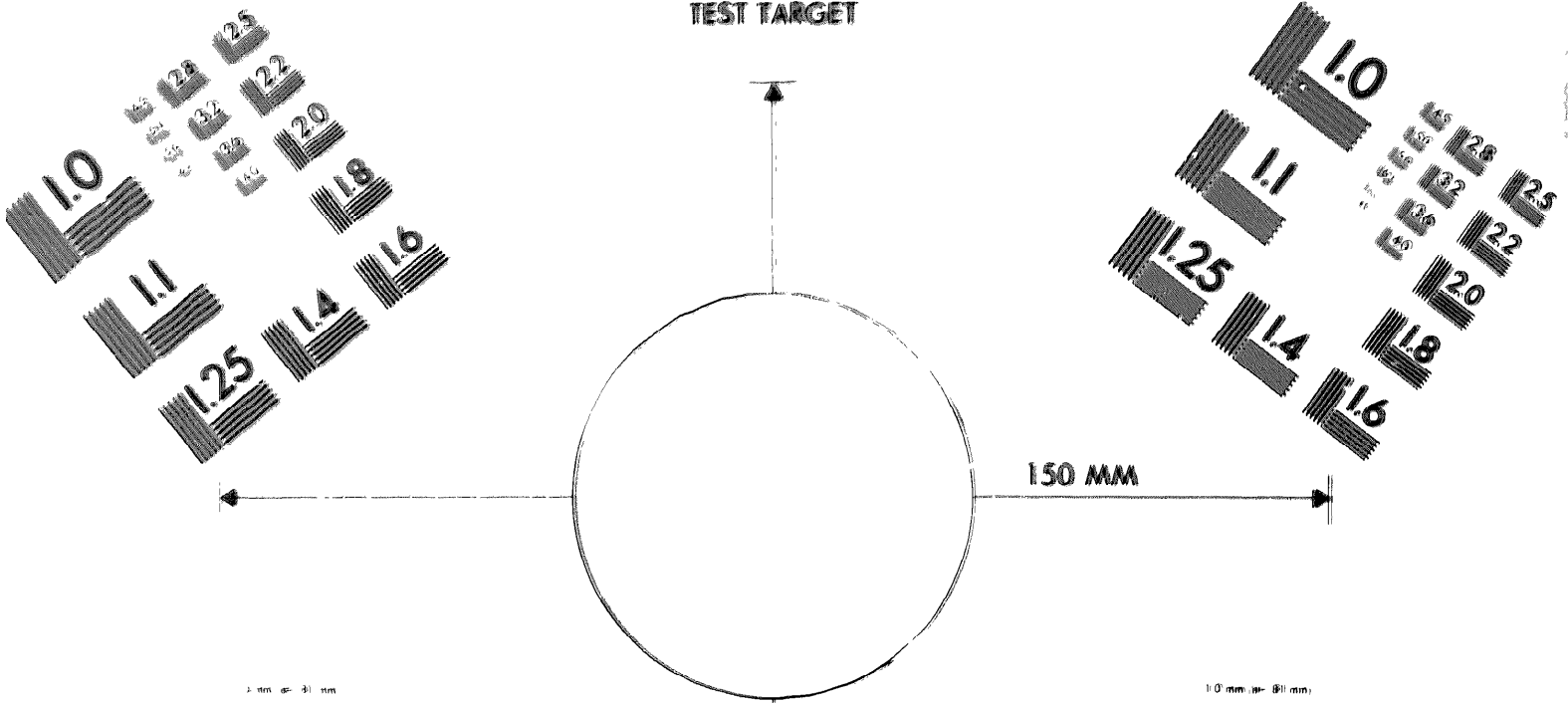
04-10-83

DATE





MICROFORM
TEST TARGET



1 mm (e= 0.1 mm)
 ABCDEFGHIJKLMNOPQRSTUVWXYZ1234567890
 abcdefghijklmnopqrstuvwxyz\$%&/'%# 1/2 1/4 3/4 — = + x & @ *

1.5 mm (e= 1.09 mm)

ABCDEFGHIJKLMNOPQRSTUVWXYZ1234567890
 abcdefghijklmnopqrstuvwxyz\$%&/'%# 1/2 1/4 3/4 — = + x & @ *

2.0 mm (e= 1.37 mm)

ABCDEFGHIJKLMNOPQRSTUVWXYZ
 abcdefghijklmnopqrstuvwxyz
 1234567890\$%&/'%# 1/2 1/4 3/4 — = + x & @ *

2.5 mm (e= 1.77 mm)

ABCDEFGHIJKLMNOPQRSTUVWXYZ
 abcdefghijklmnopqrstuvwxyz
 1234567890\$%&/'%# 1/2 1/4 3/4 — = + x & @ *

1.0 mm (e= 0.1 mm)
 ABCDEFGHIJKLMNOPQRSTUVWXYZ1234567890
 abcdefghijklmnopqrstuvwxyz\$%&/'%# 1/2 1/4 3/4 — = + x & @ *

1.5 mm (e= 1.09 mm)

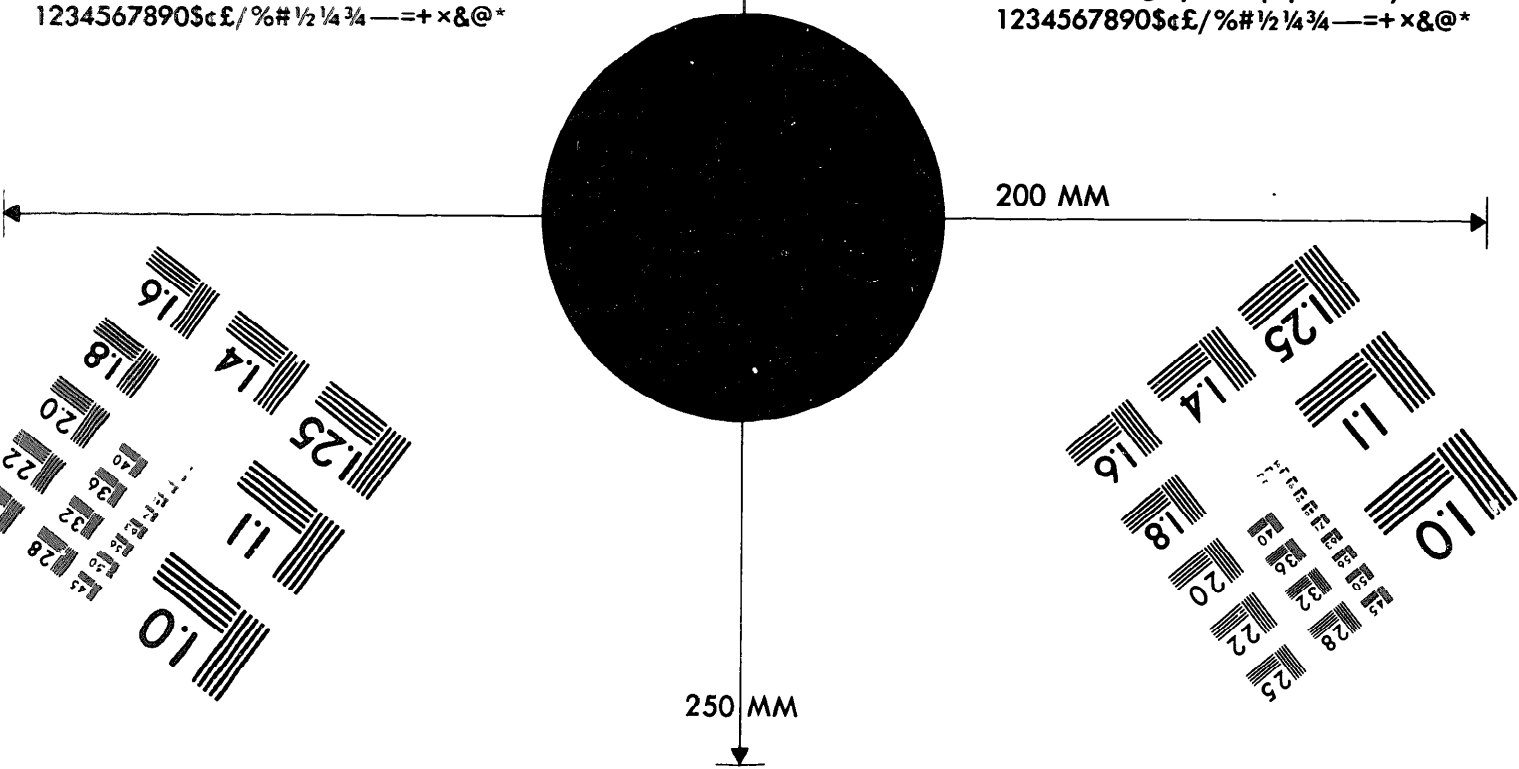
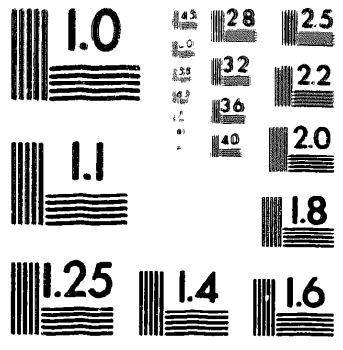
ABCDEFGHIJKLMNOPQRSTUVWXYZ1234567890
 abcdefghijklmnopqrstuvwxyz\$%&/'%# 1/2 1/4 3/4 — = + x & @ *

2.0 mm (e= 1.37 mm)

ABCDEFGHIJKLMNOPQRSTUVWXYZ
 abcdefghijklmnopqrstuvwxyz
 1234567890\$%&/'%# 1/2 1/4 3/4 — = + x & @ *

2.5 mm (e= 1.77 mm)

ABCDEFGHIJKLMNOPQRSTUVWXYZ
 abcdefghijklmnopqrstuvwxyz
 1234567890\$%&/'%# 1/2 1/4 3/4 — = + x & @ *



200 MM

250 MM